

## LEICA STORE

Discover what today's Leica portfolio has to offer after an inspirational day in the fascinating World of Leica. Take a stroll around the Leica Store in Wetzlar and seize the opportunity to pick up our products and try them out. If you should need help or advice, our expert staff will be pleased to assist in any way they can.

### OPENING TIMES:

Monday to Friday from 10 a.m. to 6 p.m. | Saturday from 10 a.m. to 4 p.m.

### CONTACT US:

Phone: +49 (0)6441 2080 999 | [store.leitzpark@leica-camera.com](mailto:store.leitzpark@leica-camera.com)

## LEICA CUSTOMER CARE

Customise your Leica product with a personalised engraving or custom leather trim! Our Customer Care department will be pleased to advise you. In addition to classical servicing and repairs, our team also offers maintenance and restoration services for historic Leica products.

### OPENING TIMES:

Monday to Friday from 8 a.m. to 5 p.m.

### CONTACT US:

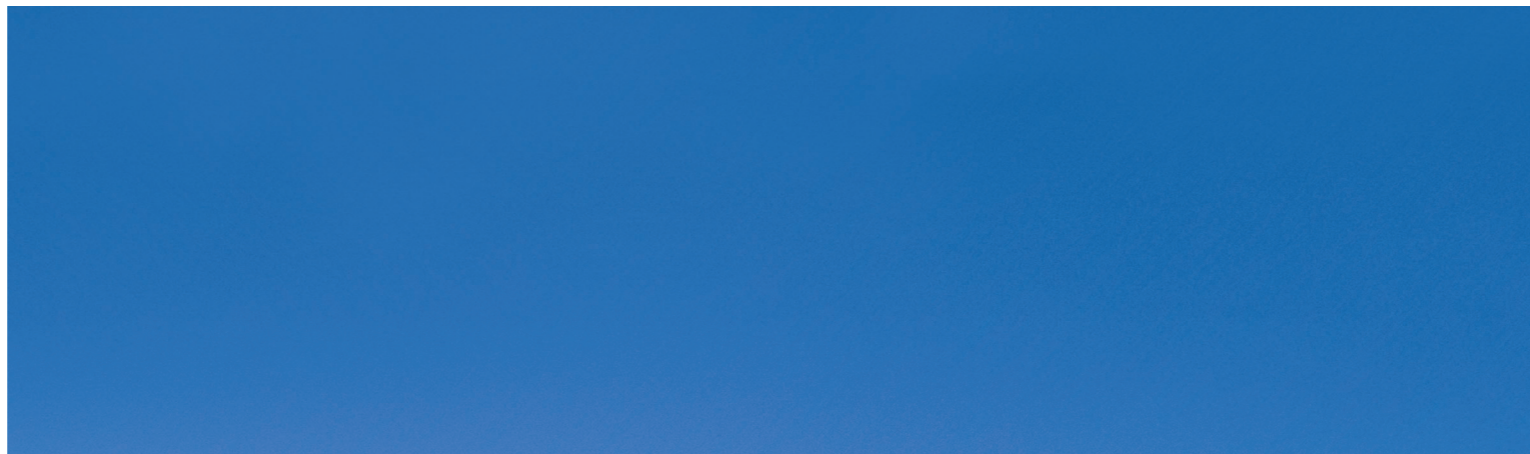
Phone: +49 (0)6441 2080 189 | [customer.care@leica-camera.com](mailto:customer.care@leica-camera.com)

## LEICA PHOTO STUDIO

Have you always wanted to hold a photo shoot in a professional studio? The Leitz-Park photo studio offers you the perfect setting for creative projects in a relaxed atmosphere.

### CONTACT US:

Phone: +49 (0)6441 2080 421 | [fotostudio@leica-camera.com](mailto:fotostudio@leica-camera.com)



Leica Camera AG | Am Leitz-Park 5  
35578 WETZLAR | GERMANY  
Phone +49(0)6441-2080-0 | Fax +49(0)6441-2080-333  
[www.leica-camera.com](http://www.leica-camera.com)



## EXPERIENCE CENTRE

Discover the Leica legend.



## A PLACE FOR THE WORLD OF LEICA

Experience the Leica legend.

Leica has returned to Wetzlar, Germany's home of optical engineering excellence, and warmly invites you to experience the Leica legend at the new company headquarters in the Leitz Park. This fascinating theme park offers Leica enthusiasts, fans of photography and other visitors from around the world exciting insights into the world of Leica. If you would like to immerse yourself in the history of Leica, we warmly invite you to take a guided tour through the Leica Experience Centre. Tours can be arranged upon request and must be booked in advance at [leicatour@leica-camera.com](mailto:leicatour@leica-camera.com). The Leitz Park is wheelchair accessible.

### OPENING TIMES OF THE LEICA EXPERIENCE CENTRE

Monday to Friday from 10 a.m. to 8 p.m.  
Saturday and Sunday from 10 a.m. to 6 p.m.

### PRICES FOR THE LEICA TOUR

Adults	6 euros
Children up to the age of 6	Free admission
Group visits* (* as of 10 persons)	3.50 euros per person
Concessionary admission* (* Children (6 to 16), trainees, students, senior citizens and disabled persons, all with an ID)	3.50 euros

### LEICA RESTAURANT AND CAFÉ LEITZ

Take a break and enjoy lunch in the Leica Casino or relax and unwind in Café Leitz. Whether hosting a larger corporate function or an intimate celebration, these venues can also be booked for private events. Please contact us for information about bookings.

### OPENING TIMES:

Monday to Friday from 10 a.m. to 6 p.m. | Saturday from 10 a.m. to 5 p.m.

### CONTACT US:

[Cafeleitz@leica-camera.com](mailto:Cafeleitz@leica-camera.com) | [leitzparkevent@leica-camera.com](mailto:leitzparkevent@leica-camera.com)



## LEICA GALLERY: THE FASCINATION OF PICTURES 2

At Leica, pictures are at the heart of everything we make and do. Countless photographers have been influencing our understanding of the world using their Leica camera. That's why the Leica Galerie is the highlight of the Leica Experience Centre. Exhibitions by German and international photographers illustrate the broad spectrum of artistic and journalistic photography made using Leica cameras. The Galerie also features the numerous cultural projects Leica is deeply involved in.

## 36 AUS 100 5

The photographic project *36 aus 100* shows a total of 36 iconic examples of Leica photography from the past 100 years. The artists exhibit wrote photographic history and contributed to the legendary reputation of the Leica brand.

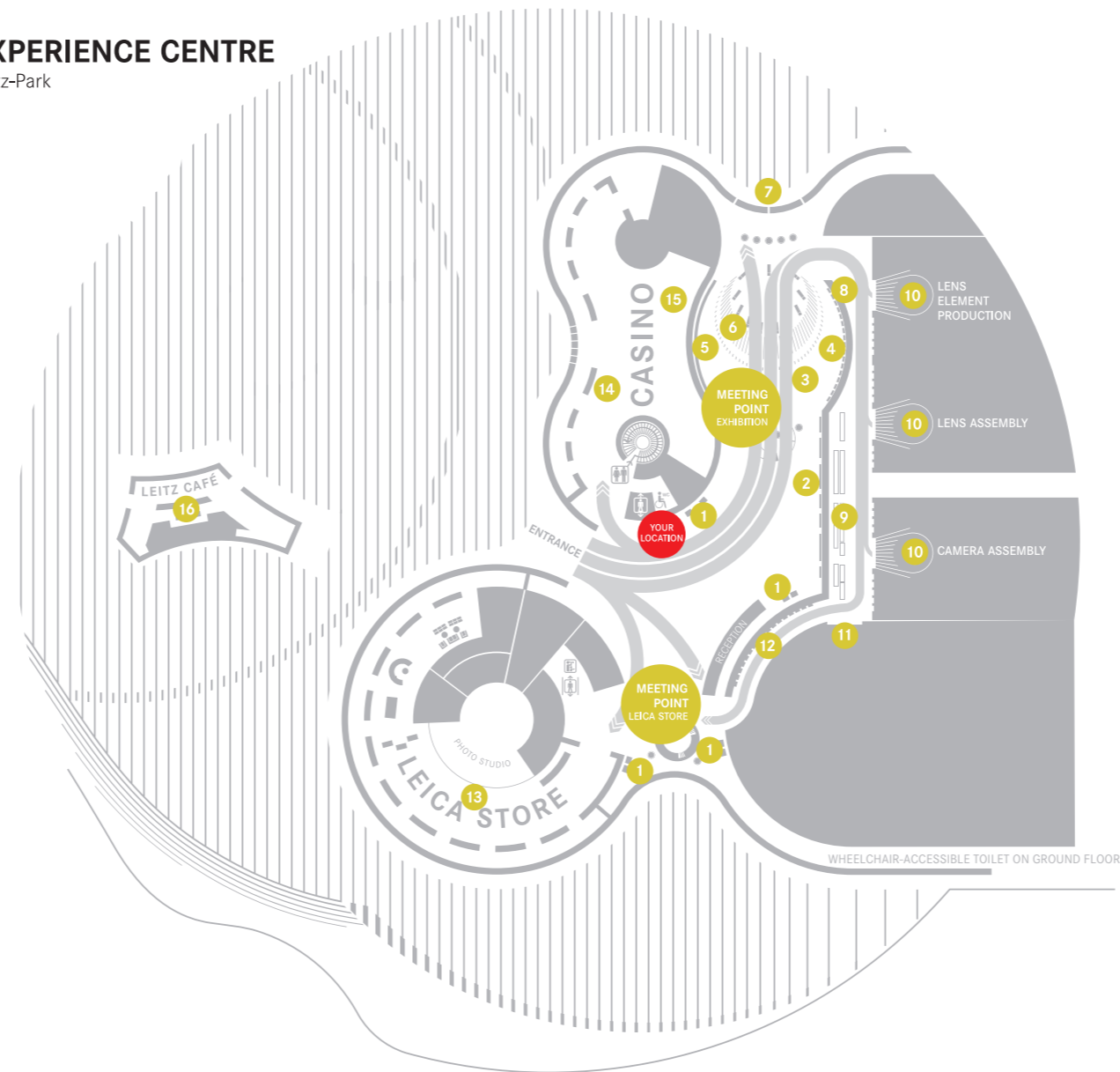
## ALFONS ALT 7

Alfons Alt, an art photographer who lives in France, designed and constructed a work of art in glass specifically for Leica's headquarters at the Leitz Park in Wetzlar. This unique installation across the three-part window on the northern side of the foyer is particularly eye-catching and a fascinating addition to the Leica Experience Centre.



## EXPERIENCE CENTRE

Leitz-Park



- 01 INFO TERMINALS
- 02 LEICA GALLERY
- 03 ROTATING PRODUCT EXHIBITION
- 04 SPORT OPTICS PRODUCTS
- 05 36 AUS 100
- 06 MILESTONES OF PRODUCT DEVELOPMENT
- 07 ALFONS ALT
- 08 LEICA COMPANY HISTORY

- 09 CAMERA AND SPORT OPTICS FAMILY TREES
- 10 VIEWS OF THE PRODUCTION PROCESS
- 11 LEICA MANUFACTURING
- 12 SPECIAL MODELS AND CURRENT PRODUCTS
- 13 LEICA STORE AND PHOTO STUDIO
- 14 GALLERY STAFF
- 15 CASINO RESTAURANT
- 16 CAFÉ LEITZ

## A LOOK BEHIND THE SCENES OF THE LEICA FACTORY 10

Take a look through three panoramic windows and discover the production facilities where lens elements, complete lenses and cameras are made. Touchscreens provide detailed information about the elaborate processes that go into the making of Leica cameras.

## 100 YEARS OF LEICA HISTORY

In the Leica Experience Centre, explore the past and present of Leica and optical manufacturing with the 'Made in Germany' seal of quality. Alongside the milestones of Leica product development (6), with 11 cameras representing the most significant innovations, regularly changing exhibitions show rare models and collectors' pieces (3). A permanent display of 17 pairs of binoculars by Leica Sport Optics offers an overview of the past 100 years of development, design and construction of sport optics at Leica. (4)

## LEICA FAMILY TREES 9

The family trees show all Leica cameras and Sport Optics products that ever went into serial production. Over 400 exhibits illustrate the unique history of the masterpieces created by the engineers at Leitz and Leica in the course of more than 100 years.

